

Giscome

Lime Project

February 2015 | NEWSLETTER #4



GRAYMONT

This is the fourth in a series of newsletters that Graymont is distributing to keep you informed about our proposed Giscome B.C. lime plant and quarry project. The proposed lime processing plant will be located on a former CN Rail siding property and will include lime kilns, storage, loading and shipping facilities, rail spurs and ancillary structures. The proposed quarry will be on Crown lands located roughly 6 km to the southeast.

PROJECT UPDATE

The Graymont project team is currently working to complete the Environmental Assessment application. Our schedule for completing the application has been extended by a few months to carry out additional hydrogeology and geotechnical fieldwork.

The Application Information Requirements (AIR) document was approved by the B.C. Environmental Assessment Office on September 22, 2014. The AIR sets out the terms of reference for the Environmental Assessment. It is an important document because it establishes the issues that need to be addressed and the information that must be included in the Environmental Assessment application.

Graymont signed a Mutual Benefits Agreement with the Lheidli T'enneh First Nation on September 17, 2014. The agreement includes our commitments to world-class standards with respect to the environment and sustainability, and to making positive contributions to the communities in which we operate.

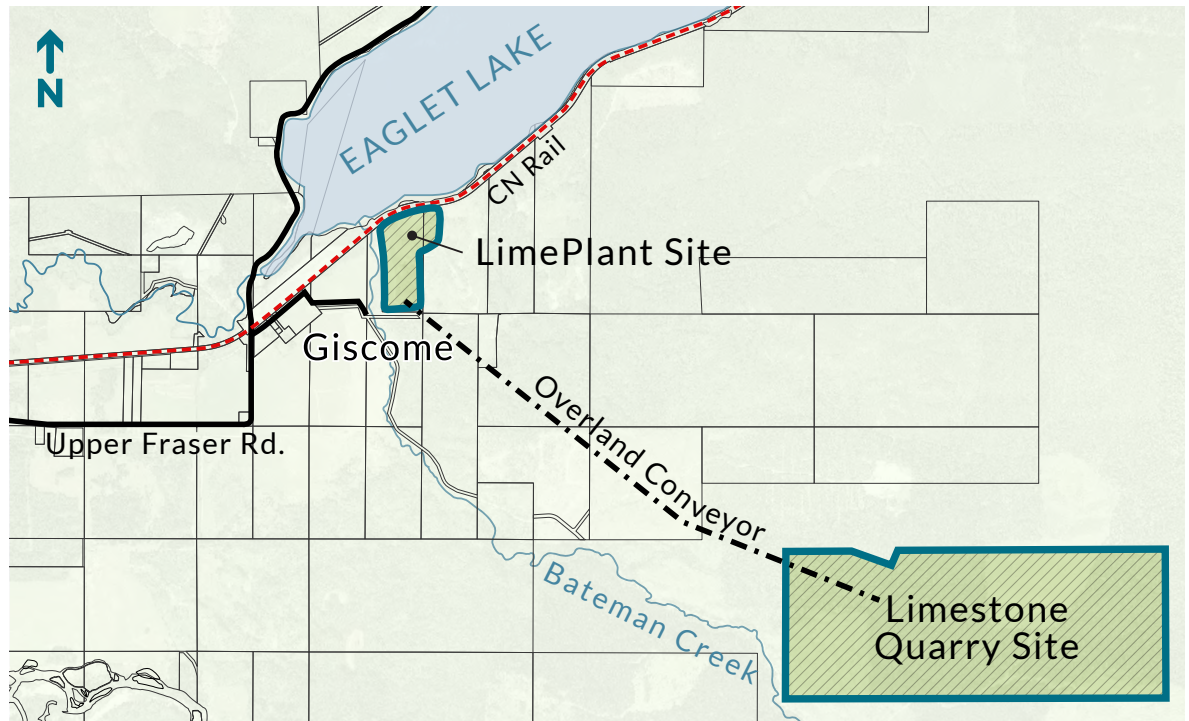


Lheidli T'enneh Chief Dominic Frederick and Graymont President Stéphane Godin at signing of Mutual Benefits Agreement, September 17, 2014.

TARGET DATES FOR KEY EVENTS ANTICIPATED IN 2015 (SUBJECT TO CHANGE)

Graymont submits the EA Application to the B.C. Environmental Assessment Office (EAO)	Spring 2015
The EAO advertises a formal 30-day Public Comment Period for the EA Application Review Stage	Summer 2015
The EAO may require an open house to provide the public with an opportunity to review the EA Application	Summer 2015

Limestone will be crushed at the Limestone Quarry Site and transported to the Lime Plant Site by overland conveyor



COMMUNITY CONSULTATION UPDATE

The Graymont project team presented a lot of technical information at our public open house meeting in Willow River in June 2014. Graymont appreciates all the comments provided to us at that time and during the public comment period for the Draft AIR document. Once the EA Application has been submitted and accepted for review the EAO will advertise a public comment period. Graymont will make the application available at accessible public locations and the EAO will post the application documents on the Electronic Project Information Centre at www.eao.gov.bc.ca. During the Application Review process, the EAO may require an open house to provide the public with an opportunity to review the EA Application and gather community comments.

CONTACT US



Graymont will continue to provide information and consult with the public through attendance at public meetings, posting updates to the project website at www.gisquewanproject.ca, future newsletters, small group meetings and one-on-one meetings as appropriate.

Please call or email our consultation coordinator, Rob Beleutz at (604) 249-1911 or email Rob at rbeleutz@graymont.com if you have any comments or questions about the project. We look forward to continuing our discussions with you.

ABOUT GRAYMONT

Graymont is a privately-owned Canadian company with our head office in Richmond, BC. We have been in the lime and limestone business for 65 years. Central to our corporate philosophy is a long-term approach to business, built on a solid commitment to sustainable growth through active participation in the community, and responsible environmental, workplace and operating practices. More information about Graymont and our products can be found at www.graymont.com.



For more information, visit us online at: www.gisquewanproject.ca



GRAYMONT